

# THE CHICKEN WHISPERER



## HOW DO I CHECK FOR RED MITES?

The red mite lifecycle can be as short as seven days, they live and reproduce in poultry housing and can survive for up to 10 months without feeding, so it's important to regularly check for signs of red mites. They only attach to feed for one to two hours at night. A weekly check should include running your hand under the perches for signs of blood spots, while tapping the wood around corners, or any nooks and crannies, this will bring out any hatched mites for a visual check.

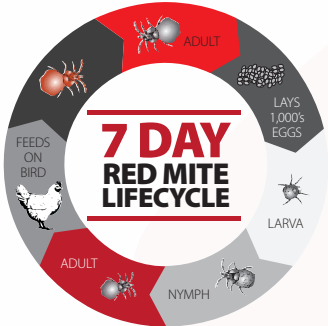
## HOW DO I MAINTAIN A MITE FREE ENVIRONMENT?

To remove the constant threat of red mites, a weekly three-step programme is advised. Firstly thoroughly clean out your coop and remove all faeces, dry matter and bedding.

Secondly, spray Nettex Total Mite Kill Ready to Use Solution onto all surfaces, including the underside of the roof. Hard to reach areas can be treated with Total

Mite Kill Aerosol which acts as a long-lasting control.

Finally, fresh bedding should be laid and then liberally apply Total Mite Kill Powder over the surface of bedding, perches and nest boxes. It's also important to include the Total Mite Kill Powder in dust baths. If you can see the powder, it's doing its job.



- From the range only Nettex Total Mite Kill Powder can be used directly on birds

## TOTAL MITE KILL READY TO USE

Total Mite Kill Ready to Use; Clean your chicken house and kill insects with the same spray!

- Ready to use solution is a multi-action cleaner with added insecticides to kill bacteria, viruses, fungi and mites to create a mite free and healthy home for your hens.
- Formulated with an oily base, when sprayed onto the surface it will help penetrate deep into any cracks and crevices where parasites tend to burrow and hide.

### How to use:

It is very important to prevent a build-up of bacteria in the coop, which promotes the spread of disease. Use Total Mite Kill Ready to use as part of your weekly hygiene regimen for your coop and housing. Remove all bedding and spray directly on to all surfaces, including the underside of the roof. After it has been cleaned and scrubbed making sure all nooks and crannies are covered, leave to dry then apply Nettex Total Mite Kill Powder. For heavy mite infestations repeat the cleaning and powder routine every 3 days to ensure any hatching eggs are killed to break the breeding/hatching cycle.

Size | 750ml



## TOTAL MITE KILL LIQUID CONCENTRATE

Highly effective insecticide and multipurpose disinfectant cleaner for professional use. Kills mites, fleas, lice and other flying and crawling insects

- Dilute 1 litre of concentrate with 10 litres of water. One litre of solution will cover 100sq/m.
- Penetrates deep into cracks, crevices and corners which parasites commonly use to hide in
- Continues to work even after drying
- Not for direct use on birds.

### How to use:

Remove all bedding and dry matter from your house, mix as per directions and spray on to all surfaces of the coop, paying careful attention to all cracks and crevices. Allow to dry before re-introducing your birds.

Size | 500ml | 2ltr



## TOTAL MITE KILL POWDER WITH DIATOMACEOUS EARTH

A natural mite control powder that can be applied directly onto all types of birds and poultry.

- The powder works mechanically on the surface of the mites, breaking down their waxy protective coating, which dehydrates and eradicates mites.
- Red mites, depluming mites, northern mites, cyst mites and spider mites, plus other insects such as cockroaches, ants, silverfish, termites, fleas, lice and ticks commonly associated with domestic pets are all susceptible to Total Mite Kill Powder.

### How to use:

Apply in the nest box and on top of bedding as it is an effective way of applying powder to the hens underside when they set down to lay. Repeat weekly when cleaning out the house.

Mite Kill powder may also be mixed with wood ash in the dust bath, which should be in a covered area of the run.



Size | 200g | 300g | 2kg | 5kg  
2kg and 5kg contain a free shaker pack.

## LOUSE POWDER

An effective powder against lice, mites and fleas, but will also kill most crawling and flying insects such as silverfish, beetles, ants and wasps.

- Contains an approved insecticide for use in chicken coops, on hard porous and non-porous surfaces, soft furnishings and in pet bedding, animal houses and sheds.
- May be used in conjunction with Total Mite Kill Liquid as part of a weekly hygiene regimen.

### How to use:

Use the shaker pack to sprinkle around the coop after spraying with Total Mite Kill Liquid Concentrate paying special attention to nooks and crannies, the ends of roosting bars and their brackets.



Size | 350g shaker pack | 3kg

## TOTAL MITE KILL SPRAY

A rapid knockdown insecticide in an aerosol format

- Specifically formulated to kill common mites (red, depluming and northern mites) in poultry houses, arks, coops and outbuildings etc.
- Total Mite Kill Spray is effective against house flies, little house flies, blow flies, small dung flies, lice, fleas, wasps, mosquitoes and moths.
- Migrating mites will be controlled as its long-lasting residual action penetrates deep into crevices where mites burrow.

### How to use:

Use once a month throughout the year, especially during winter to destroy dormant mites. Continue use to prevent and control mite infestation during the warmer months when mites are prevalent.

Spray inside the coop deep into nooks and crevices where mites burrow. It can be used on hard porous and non-porous surfaces.



Size | 250ml | 500g

## TOTAL MITE KILL TRIAL SIZE

The perfect Mite Kill Trial size solution

### Contains:

- Total Mite Kill Aerosol 250ml
- Total Mite Kill Powder 200g
- FREE Total Mite Kill Spray Ready to Use 250ml



# POULTRY PRODUCT GUIDE

## NETTEX

## THE CHICKEN WHISPERER



### A CLEAN FLOCK IS A HEALTHY FLOCK

Keeping your coop clean is a top priority...EVERY WEEK! When buying new housing bear in mind that you will need to dismantle and clean it thoroughly frequently. So make life easy; choose a sturdy coop with few nooks and crannies and one that is easy to take apart for cleaning.

Most coops come with a run attached, but make sure both have strong locks and are placed on solid ground to prevent foxes burrowing in.

### Top management tip:

Sprinkling some clean litter on the run area will give the birds something to scratch about in and will absorb any faeces and odours. Shredded hemp or rapeseed products are both dry and de-odourising, making them firm favourites with modern chicken keepers.

## VIRATEC-P POULTRY DISINFECTANT

A broad spectrum poultry disinfectant powder concentrate. It can be used on poultry housing, arks, equipment and on porous surfaces, effective in the presence of organic matter.

- 500g will make 50 litres of solution

### How to use:

Mix up a solution into a large bucket for soaking poultry utensils or fill a spray bottle for application to all poultry equipment.



Size | 500ml

## POULTRY 4 IN 1 DISINFECTANT

Poultry 4 in 1 disinfectant kills bacteria and viruses associated with poultry disease

- Suitable for feeders and drinkers
- Sanitises hatching eggs and eating eggs
- Sterilises wild bird feeders and drinkers
- Use on all incubating equipment

### How to use:

Spray directly onto all equipment and utensils once a week, and leave to dry. When using an incubator to hatch, ensure all incubator parts are disinfected thoroughly before use, any hatching eggs should be wiped carefully with cold disinfectant solution before setting in the incubator.

For use as an egg wash, spray directly on to the eggs and leave to dry. Dry matter may be wiped off the egg carefully. Egg wash will not affect the egg integrity.



Size | 500ml

# COMPLETE POULTRY CARE FROM NETTEX

## TECHNICAL PRODUCT ENQUIRIES

Please contact:  
E: sales@net-tex.co.uk  
T: +44 (0) 1634 257 150

**NETTEX**  
www.nettexpoultry.com

## GROUND SANITISING POWDER

For use in coops and runs to help maintain a healthier environment for your poultry.

- Helps maintain a low risk environment for poultry. This helps reduce exposure to health and performance compromising environmental factors
- Helps absorb moisture and the odour of faeces and organic matter, reducing the risk they pose to bird health
- Extends bedding life
- Provides disinfection - Contains Viratec-P

### How to use:

Apply liberally where faeces and organic matter are prevalent. Once every 3 weeks shake powder over run and inside housing and nesting boxes ensuring a light coating is visible. There is no need to remove bedding but birds should be removed during application and can be returned after a few minutes.

Size | 500g | 2kg | 5kg



## THE CHICKEN WHISPERER



### KEEP YOUR FLOCK HEALTHY AND HAPPY

As a chicken keeper you will enjoy adding new birds to your flock periodically. But it's important to introduce them carefully to avoid upsetting the pecking order. Use alternative housing to quarantine the new birds whilst you treat them for worms and lice, then introduce the new recruits to the rest of the flock gradually. It's natural to see the odd scrap whilst they settle their differences – just be sure to treat any wounds until they stop bleeding.

### Top management tip:

A persistent, bullying bird can be deterred from feather-pecking by using a foul smelling spray on the rest of the flock such as Nettex Anti-Feather Pecking Spray.

## POULTRY WOUND SPRAY

A highly effective, powerful antibacterial wound cleansing aerosol spray. Specifically formulated for application to minor external wounds, grazes or in skin punctures requiring immediate attention.

- When applied a violet residue is left, indicating the affected area has been covered.
- Violet also helps disguise the appearance of any blood to help prevent bullying and pecking.

### How to use:

Simply spray over the affected area.



Size | 200ml

## POULTRY ESSENTIALS KIT

Our Poultry Essentials Kit has been designed to provide all the necessary products essential to help maintain and improve the health and vitality of your flock. Suitable for up to 8 birds it should last at least 8 weeks (some products will last longer). It's a great way to see how Nettex products work together to improve the welfare of your chickens.

### It contains:

- Total Mite kill 200g powder
- Total Mite Kill 250ml aerosol
- Herbal Gut Conditioner 100ml
- Ground Sanitising Powder 500g
- Vitamin Boost + Seaweed 100ml liquid
- FREE feed scoop and a FREE sachet of seaweed, and a Nettex Poultry product guide
- Contained in a large bucket useful for skipping out or even feed storage



\* Compared to purchasing products individually

BUY & SAVE £15\*





## Foreword from the CHICKEN WHISPERER

When you start keeping chickens, the excitement of retrieving that first egg never leaves you. The difference in quality between eggs from your own flock and the shop bought product is often stark and then you have the endless amusement you get from your own hens scratching about as you let the birds out each morning.

Hen keeping is pretty straightforward, provided you follow some simple husbandry rules from the Nettex Chicken Whisperer designed to keep your flock healthy and productive.

**The Nettex poultry product range is comprehensive, ranging from nutrition to sanitising solutions for your flock – you'll find something that will suit your system.**

## THE CHICKEN WHISPERER



### KEEPING YOUR FLOCK MITE FREE IS KEY TO KEEPING YOUR BIRDS HEALTHY

Scaly leg mites are particularly nasty. These burrow under the scales of a bird's legs causing great irritation, which the hen tries to relieve by pecking. This creates painful sores on the legs. Scaly Legs can be managed with effective spray based formulations.

#### Top management tip:

Apply the spray onto a soft toothbrush and apply to the legs in an upward motion, gently working it under the scales. Note that the scales will not improve in appearance until the bird next moults. Do not remove any damaged scales.

#### For general maintenance:

- When buying in birds always check them carefully and treat them before introducing them to the rest of the flock
- Spray the legs, comb and wattles every few weeks
- Always isolate and quarantine any affected birds

## SCALY LEG REMOVER

A specifically blended formulation designed to eliminate and effectively control the scaly leg parasite in one simple spray application.

#### Scaly Leg Remover works in three ways:

- Suffocating the scaly leg parasite eliminating the source of irritation
- Providing a natural barrier to deter and protect legs from further infestation
- Providing relief by eradicating the source of discomfort

#### How to use:

Spray directly onto the legs, feet, comb and wattles to treat infested areas. Repeat every 5-6 days (to break the egg cycle) until the infestation has gone.

**Size | 250ml | 500ml**



## THE CHICKEN WHISPERER



Cannibalism and feather pecking are a complex multifactorial behavioural problem of poultry and game birds worldwide. Predisposing factors include tenosynovitis and other diseases affecting mobility, boredom and lack of available nutrients.

#### Symptoms include:

- Pecking at feet (especially in young chicks)
- Pecking at vents (in adult layers and turkey poults 8-12 days old)
- Pecking at the head, face and wings
- Feather pulling

Cannibalism and feather pecking may lead to skin wounding, leaving it open to bacterial infection. In severe cases this can lead to blood loss and anaemia.

## ANTI-FEATHER PECKING SPRAY

The first step in defence against feather pecking and bullying.

- Helps prevent biting, plucking and cannibalism
- It contains a foul-tasting substance with a very strong odour and most biting or plucking should cease after 1-2 days.
- Anti-Feather Pecking Spray also includes anti-bacterial agents that will help disinfect minor skin abrasions. These agents also help minimise the spread of bacterial infections and help support the healing process.

#### How to use:

Spray on to any affected areas including skin where feathers have been removed. Use on feathers should be avoided.

**Size | 250ml | 500ml**



## THE CHICKEN WHISPERER



Good nutrition delivers healthier, tastier eggs and choosing the right feed is key. Feed chicks up to six weeks of age chick crumbs, then use a growers feed (pellets or mash) until the pullets start laying at around 20 weeks. Once the birds begin producing eggs they can move onto a layer ration.

During illness or stress give the flock a mineral and vitamin boost to help support health and productivity. Birds should also be given an internal worming supplement every month. Treat litter periodically to reduce larvae and the worm egg burden.

#### Top management tip:

Don't be tempted to feed your birds too many treats and never offer human food – their digestive systems can't cope with salt or sugar in processed meals. A fat hen will soon stop laying and her health will suffer. Some fresh greenery is fine, but limit portions and offer only at the end of the day.

## MINERAL BOOST WITH PREBIOTICS AND SEAWEED

A nutritional feed for laying hens containing high levels of limestone and oyster grit to assist digestion and support shell quality.

- Seaweed helps to support yolk colour
- Added calcium supports shell health and strength
- Probiotics help support immune function and gut health
- Aniseed encourages the bird to feed and supports appetite

#### How to use:

Add Mineral Boost to feed twice a week to support optimum health.

**Size | 450g**



## VITAMIN BOOST + WITH ADDED SEAWEED

Supplies essential vitamins and minerals through drinking water to help support bird health and vitality all year round.

- Supports maintenance of peak egg production and bird health
- Seaweed helps support yolk colour
- Biotin helps support feather growth in young birds and when moulting

#### How to use:

Add Vit Boost+ to your bird's water at 5ml per 4.5 litres of water

During periods of nutritional stress add 5 ml to 1 litre of drinking water. Make a fresh solution daily.

**Size | 100ml | 250ml | 500ml**



## NUTRI DROPS

A fast acting pick-me-up packed full of vitamins and minerals and extra B vitamins to help support birds in stressful situations. The support is rapid and noticeable.

- Instant energy source for weak birds (energy levels may be seen to be improved in as little as 30 minutes)
- Provides immune supporting vitamins during periods of environmental stress e.g. when feed intake is depressed at high temperatures
- Helps support peak egg production at times when maximum stamina and energy are required
- Helps support the bird during periods of stress, for example during vaccination, handling and following antibiotic treatment when feed absorption can be disrupted

- Helps support appetite and feed efficiency
- Aids in the preparation for onset of lay
- Considering using when introducing a new bird to an established flock, as this is a very stressful experience for a bird

#### How to use:

Administer 1ml per 1kg of body weight (average weight of an adult bird is 2.5kg) directly into the mouth of the bird for a minimum of 3 days. Use for up to a period of 5 days.

**Size | 30ml**



## HERBAL GUT CONDITIONER

A 100% natural formulation to help support gut hygiene and the digestive system.

- Allium sativum: a natural disinfectant to help maintain a fresh and healthy gut
- Syzygium aromaticum: to support healthy bowel function and movement
- Juglans nigra: a natural cleanser
- Artemisia absinthium: an extract of wormwood

#### How to use:

Add 1ml (1 pump) of Herbal Gut Conditioner to 50ml of fresh drinking water per bird for 3 consecutive days per month. The quantity of fresh water available should be less than usual to ensure consumption.

**Size | 100ml | 250ml**



# NETTEX

## POULTRY GARLIC GRANULES

Garlic is a natural health supporting herb that helps support egg production and encourages healthy appetites. Some studies have shown a reduction of cholesterol levels in eggs by the inclusion of garlic in the hen's diet. It can be easily added to the ration or the water to provide its benefits. After a few weeks of continuous ingestion it may also help reduce the sulphur in the chicken's droppings reducing the smell in the coop, improving the coop and environment.

#### How to use:

1 x 25ml scoop per 1 kg of feed mixed in well, or 1 x 25ml scoop per 4.5 litres of water. All supplements should be introduced to the diet gradually.

**Size | 350g | 1kg**



## POULTRY MINT & GARLIC GRANULES

Natural support for appetite, egg production and circulation. Mint and garlic granules are added to food to help encourage consumption and give natural support to the circulation and immune system. Conveniently provided ready dried and mixed means you can quickly and easily add them to the ration gaining all the natural benefits of garlic and mint to support the health of your flock.

#### How to use:

2 x 25ml scoops per 1 kg of feed, mixed in well. All supplements should be introduced to the diet gradually.

**Size | 275g | 800g**



## POULTRY SEAWEED

Natural support for yolk colour, egg shell strength and lay.

Seaweed is full of natural essential amino acids which are the building blocks for everything your hens produce, such as tasty, strong shelled eggs and healthy feathers! Easily added to the feed it will support yolk colour, shell strength and general health of all birds.

At moulting adding seaweed to your hens diet will help provide extra essential amino acids to support the new feather growth of your birds.

#### How to use:

1 x 25ml scoop per 1 kg of feed mixed in well. All supplements should be introduced to the diet gradually.

**Size | 400g**



## POULTRY CIDER VINEGAR

Poultry cider vinegar is natural, pure, unfiltered, non-pasteurised product that can be added to feed or water. A good source of vitamin A, vitamin C, calcium and phosphorous. Poultry Cider Vinegar can help to support the immune system, maintain vitality and good feather condition. When added to water at the rate of 20mls to 1 litre it will help sanitise the water and the drinker. Natural properties of the product will also support birds through times of stress such as weather extremes, moving house, introduction of new birds or after fox attacks.

#### How to use:

20mls per 1 litre of water.

**Size | 1 litre**



visit  
**www.nettexpoultry.com**  
for

- More information
- Exclusive competitions
- Product information
- Find your local supplier
- Access expert poultry advice
- 'How-to' videos for useful hints and tips on how to use our range.